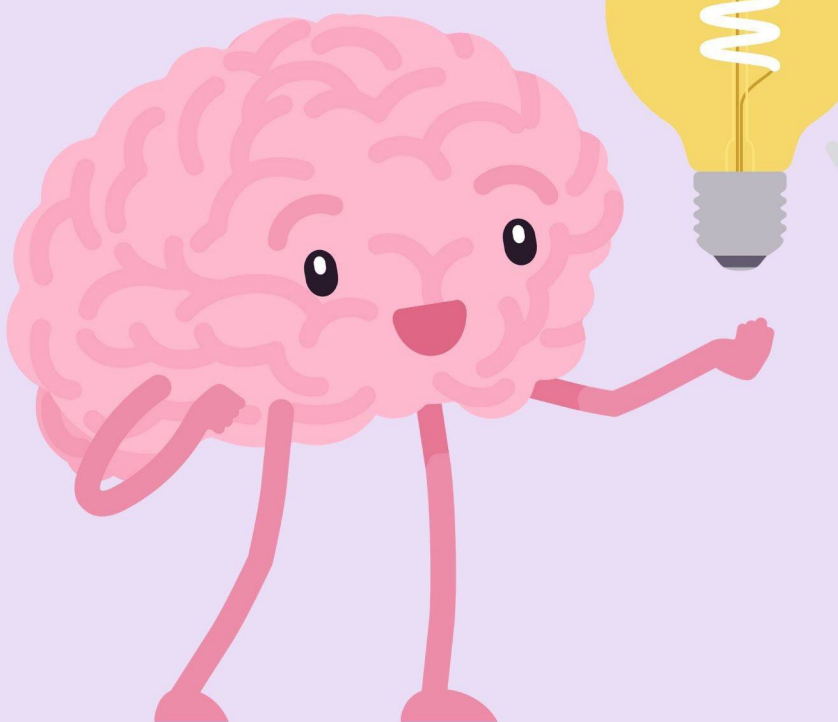


# CRITICAL THINKING

## HOW DO PAC STUDENTS RATE?

### OUR LEARNING OUTCOME

Palo Alto College students exhibit habits of mind characterized by the comprehensive exploration of issues, ideas, artifacts, and events before accepting or formulating an opinion or conclusion.



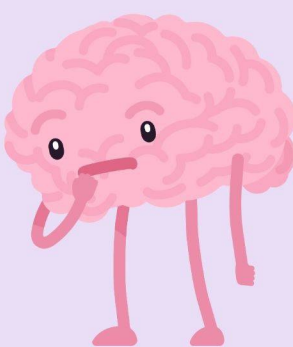
### HOW WE MEASURE IT

Our faculty raters look at a sample of student work taken from PAC courses across the curriculum, and rate them based on **three** criteria:



#### EXPLANATION

How a student summarizes the issue.



#### EVALUATION

How a student determines relevant evidence and viewpoints to more fully understand the issue.



#### RESULTS/ CONCLUSION

How a student makes an informed judgement.

## 2024-25 ASSESSMENT RESULTS

#### CRITERION 1: EXPLANATION

DID NOT MEET STANDARD  
2.8%

MIDDLING  
1%

143 ARTIFACTS  
RATED

MET STANDARD  
96.5%

#### CRITERION 2: EVALUATION

DID NOT MEET STANDARD  
8.9%

MIDDLING  
2%

135 ARTIFACTS  
RATED

MET STANDARD  
87.4%

#### CRITERION 3: RESULTS/CONCLUSION

DID NOT MEET STANDARD  
12.5%

MIDDLING  
5.1%

136 ARTIFACTS  
RATED

MET STANDARD  
82.4%

## QUESTIONS AND TAKEAWAYS

### DID WE HIT OUR TARGET?

The current target, as determined by the Academic Assessment Committee, is **70% at 'met standard.'** Ratings **exceeded** this number for all criteria!

### CAN THESE RESULTS BE GENERALIZED TO THE ENTIRE STUDENT BODY?



Unfortunately, no. In order to be representative of the population (**2,854** eligible students), we needed **339** artifacts. Our sample was initially built with **576** randomized students across a variety of courses. From this pool, we were able to pull **166** eligible artifacts from Canvas. Once scoring began, **31** artifacts were found to be unratable for at least one criterion, which further reduced the sample.

### HOW OFTEN DID RATERS AGREE OVER SCORES?

Pretty often! After a norming exercise, their scores were consistent **90.8%** of the time. This is consistent with past cycles.



WANT MORE? LET'S  
CONTINUE THE  
CONVERSATION!

DR. M. MELISSA ELSTON, ASSESSMENT COORDINATOR  
PHONE 210-486-3265 EMAIL [melston@alamo.edu](mailto:melston@alamo.edu)